

TRANSMITTAL LETTER

TOWN OF LONGBOAT KEY

PLANNING ZONING & BUILDING

610 GENERAL HARRIS STREET

LONGBOAT KEY, FL 34228

PHONE: 941-316-1966

FAX: 941-316-1970

TO: RAUDY FOWLER

FROM: MARK

DATE: 12/4/98

COMPANY: GM CONST.

PHONE: 383-9205

FAX: _____

RE: REQUEST FOR CHANGE ORDER FOR PERMIT # 15272

RESPONSE TO PLAN REVIEW DATED: _____

SITE LOCATION: 5550 G.M.D.

ATTACHMENTS: _____ sets of plans, pages # _____

Other: _____

SPECIFICS OF REQUEST, DETAILS OF CHANGE ORDER REQUEST, ETC.:

CHANGED ORDER FOR NEW BASE PLATES
SIMPSON BRACKET EQUAL TO ORIGINAL
CB 1010

STAFF RESPONSE:

Approved

Staff signature: 

Date: 12-4-98

M E M O R A N D U M

DATE: December 4, 1998

TO: Randy Fowler, Building Official

FROM: James Linkogle, Public Works Operations Manager

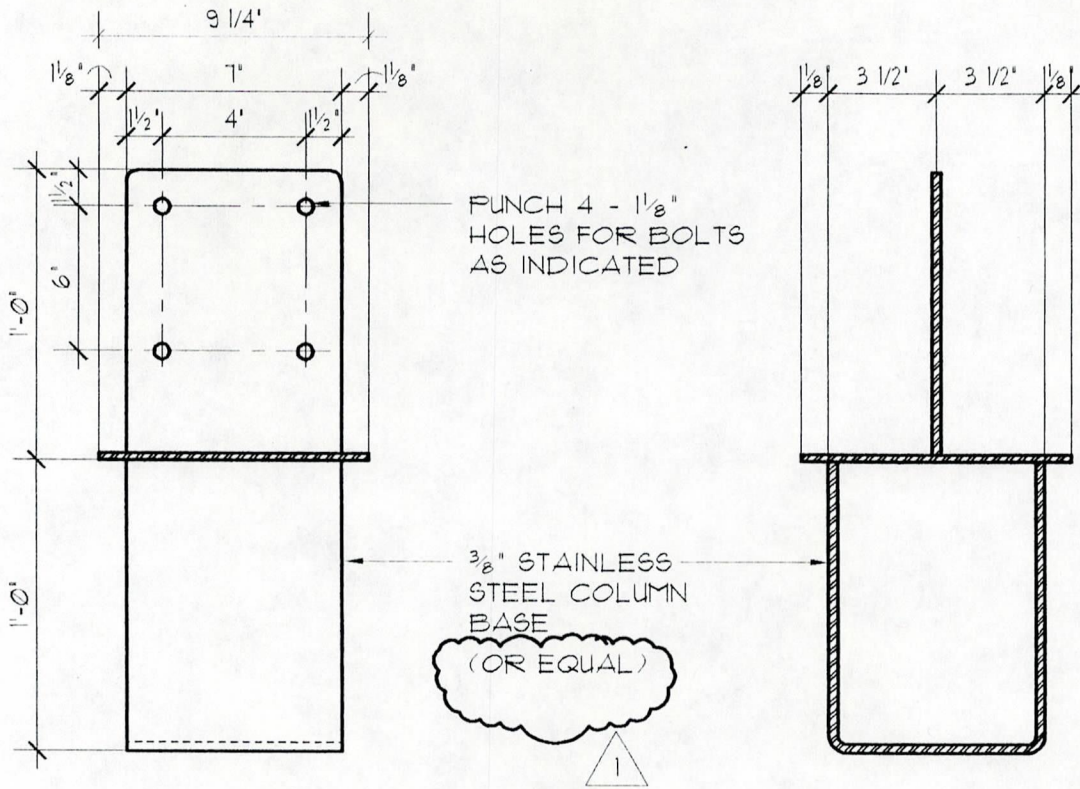
SUBJECT: POST BASE SUBMITTAL
Durante Park Restrooms



Please have you staff review and accept this product for the column post bases on the Durante Park restroom project. As you know we are providing all of the materials for the Contractor to perform the work for the construction of the facilities. Due to costs involved and product availability we are suggesting the use of the Simpson CB1010 column base anchors as an approved "OR EQUAL" alternate to the detail in the amended plans attached.

Thank you for your cooperation.

cc; Marty Black, Community Services Director
C&M Construction
Maddox & Associates, Architects



COL. BASE DETAIL

1
A-5

SCALE: 1/2" = 1'-0"

APPROVED

DATE:

PERMIT APPROVAL IS CONDITIONED ON FULL COMPLIANCE, WHEN FIELD INSPECTED WITH ALL PROVISIONS OF THE CODES OF THE TOWN OF LONGBOAT KEY AND ALL OTHER APPLICABLE LAWS. ALL BUILDINGS, A/C, MECHANICAL, PLUMBING, ELECTRICAL AND FIRE INSTALLATIONS SHALL BE MADE BY LICENSED CONTRACTORS AND/OR RESIDENTIAL HOMEOWNERS.

BLDG: 74 ELEC: _____
 PLUMBING: _____ MECH: _____
 ROOF: _____ FIRE: _____

PERMIT NO. _____

FILE COPY

William E. Maddox
12/2/98

MADDOX & ASSOCIATES ARCHITECTS

JOAN M. DURANTE PARK RESTROOM BUILDING

PROJECT NO. 9901204
 DATE: 5/12/98
 DRAWN BY: GW
 CHECKED BY: WEM
 SCALE:
 SHEET NO.

A-5

NO.	DATE	REVISION
1	12/2/98	

Fully-adjustable post base offers moisture protection, structural values, ease of installation, and finished hardware appearance. Standoff plate provides flat end bearing for post and keeps post end 1 1/8" above surface moisture.

MATERIAL: 12 gauge adjustment and stand-off plates; 16 gauge base cover

FINISH: Galvanized

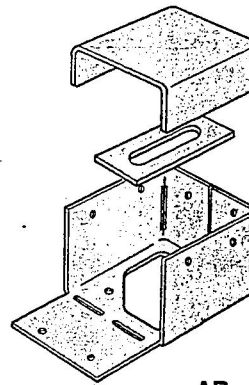
INSTALLATION: • Use all specified fasteners. See General Notes.

- Post nail holes are sized for 10d commons.
- Rectangular adjustment plate assumes 1/2" diameter anchorage.
- The AB is supplied as shown; position the post, secure the easy-access nut, then bend up the fourth side.
- For non-bolt, non-adjustment installations, 3/16" holes for optional nail holddown or powder-actuated fasteners in a concrete or wood base are in the base cover.
- A 2" minimum side cover is required to obtain the full load.
- Not recommended for non-top-supported installations such as fences.

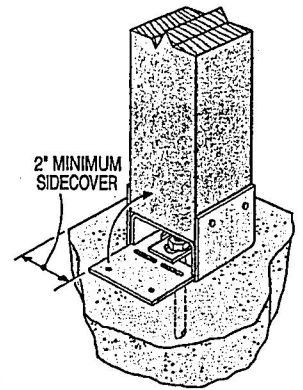
CODES: BOCA, ICBO, SBCCI NER-393; City of LA RR 24818.

Model No.	Dimensions		Allowable Downloads (100)
	W	L	
AB44	3 3/8	3 3/8	4065
AB46	3 3/8	5 1/4	4165
AB44R	4	4 1/8	4065
AB46R	4	6	4165
AB66	5 1/2	5 5/8	5335
AB66R	6	6	5335

1. Loads may not be increased for short-term loading.



AB
Can be installed on existing slab



Typical AB Installation

LCB/CB COLUMN BASES

LCB—Low-cost post base for patios, carports, breezeways and porches.

CB—For columns that require high structural values and rugged performance.

FINISH: LCB, CB44, CB46, CB66—galvanized; CB—Simpson gray paint or HDG.

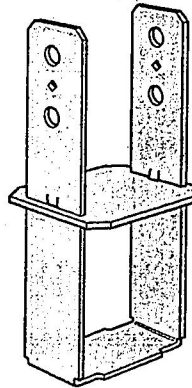
INSTALLATION: • Use all specified fasteners. See General Notes.

- For full loads, minimum side cover required is 3" for CB, 2" for LCB.
- Install all models with base plate flush with concrete.
- Not recommended for non-top-supported installations such as fences.

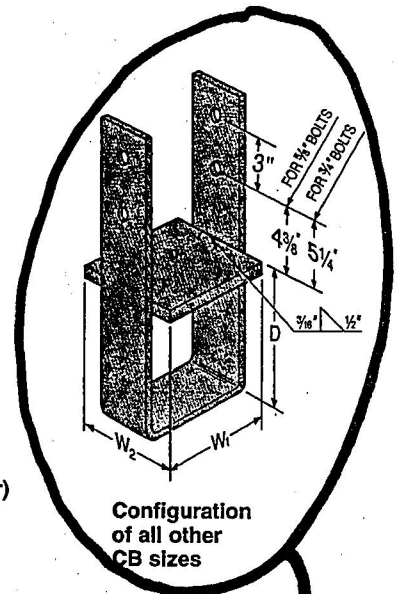
OPTIONS: • The LCB may be shipped unassembled; specify "Disassembled".

- Rough and other sizes available; specify W1 and W2 dimensions. Consult Simpson for bolt sizes and allowable loads. See PBS and CBS.

CODES: BOCA, ICBO, SBCCI NER-393 and NER-432; City of L.A. RR 24818 and RR 25074 (CB).



CB44 configuration
(CB46, CB66 similar)



Configuration of all other CB sizes

Model No.	Nominal Post Size	Material		Dimensions			Post Fasteners		Uplift average Uilt	Allowable Loads			
		Strap	Base (Ga)	W ₁	W ₂	D	Nails	Bolts Qty Dia		Nails (133)	Bolts (160)	Nails (133)	Bolts (160)
LCB44	4x4	12 ga x2	16	3 3/8	3 3/8	6 1/2	12-16d	2 1/2	17853	2255	2705	3545	4250
CB44	4x4	7 ga x2	7	3 3/8	3 3/8	8	—	2 5/8	14350	—	—	4200	4200
LCB46	4x6	12 ga x2	16	3 3/8	5 1/4	6 1/2	12-16d	2 1/2	17853	2255	2705	3530	4240
CB46	4x6	7 ga x2	7	3 3/8	5 1/4	8	—	2 5/8	14350	—	—	4200	4200
CB48	4x8	7 ga x2	7	3 3/8	7 1/2	8	—	2 5/8	14350	—	—	4200	4200
CB5	GLULAM	7 ga x3	7	5 1/4	SPEC	8	—	2 5/8	14350	—	—	4200	4200
LCB66	6x6	12 ga x2	16	5 1/2	5 1/2	5 1/2	12-16d	2 1/2	17853	2255	2705	3525	4230
CB66	6x6	7 ga x3	7	5 1/2	5 1/2	8	—	2 5/8	14350	—	—	4200	4200
CB6-7	6x	7 ga x3	7	5 1/2	7	8	—	2 5/8	14350	—	—	4200	4200
CB7 1/2-4	PSL	3 ga x3	7	7 1/8	3 1/2	8	—	2 3/4	20650	—	—	6650	6650
CB7 1/2-6	PSL	3 ga x3	7	7 1/8	5 1/2	8	—	2 3/4	20650	—	—	6650	6650
CB7 1/2-7	PSL	3 ga x3	7	7 1/8	7	8	—	2 3/4	20650	—	—	6650	6650
CB68	6x8	7 ga x3	7	5 1/2	7 1/2	8	—	2 5/8	14350	—	—	4200	4200
CB86	6x8	3 ga x3	7	7 1/2	5 1/2	8	—	2 3/4	20650	—	—	6650	6650
CB7	GLULAM	3 ga x3	7	6 1/8	SPEC	8	—	2 3/4	20650	—	—	6650	6650
CB88	8x8	3 ga x3	7	7 1/2	7 1/2	8	—	2 3/4	20650	—	—	6650	6650
CB9	GLULAM	3 ga x3	7	8 1/8	SPEC	8	—	2 3/4	20650	—	—	6650	6650
CB1010	10x10	3 ga x3	3	9 1/2	9 1/2	8	—	2 3/4	20650	—	—	6650	6650
CB1012	10x12	3 ga x3	3	9 1/2	11 1/2	8	—	2 3/4	20650	—	—	6650	6650
CB1212	12x12	3 ga x3	3	11 1/2	11 1/2	8	—	2 3/4	20650	—	—	6650	6650

1. Uplift loads have been increased 33% and 60% for earthquake or wind loading, with no further increase allowed.
2. PSL is parallel strand lumber.

TRANSMITTAL LETTER

TOWN OF LONGBOAT KEY

PLANNING ZONING & BUILDING

610 GENERAL HARRIS STREET

LONGBOAT KEY, FL 34228

PHONE: 941-316-1966

FAX: 941-316-1970

TO: PADY FOWLER

FROM: MARK WICKERSTAM

DATE: 11/23/98

COMPANY: C+M CONSTRUCTION

PHONE: 383-9215

FAX: _____

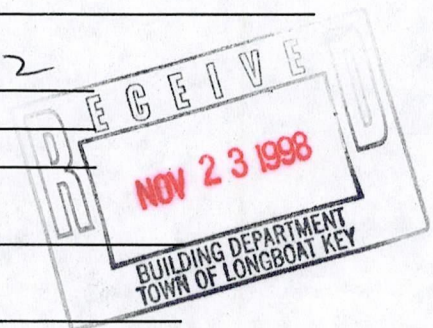
RE: REQUEST FOR CHANGE ORDER FOR PERMIT # 15 272

RESPONSE TO PLAN REVIEW DATED: _____

SITE LOCATION: 5550 G.M.D.

ATTACHMENTS: 3 sets of plans, pages # 1

Other: _____



SPECIFICS OF REQUEST, DETAILS OF CHANGE ORDER REQUEST, ETC.:

NEW ANCHOR DETAIL

STAFF RESPONSE:

Approved Building file

Staff signature: [Signature]

Date: 11-30-98



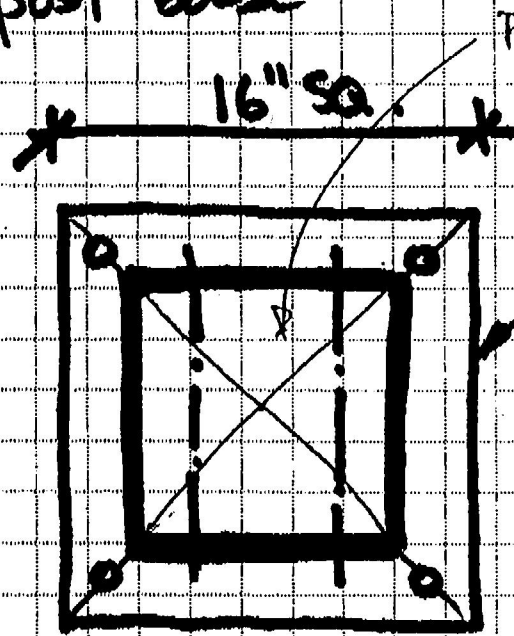
SNELL ENGINEERING

CONSULTANTS, INC.

PROJECT NUMBER: **98145**
PROJECT NAME: **Durante Park**
- Restroom

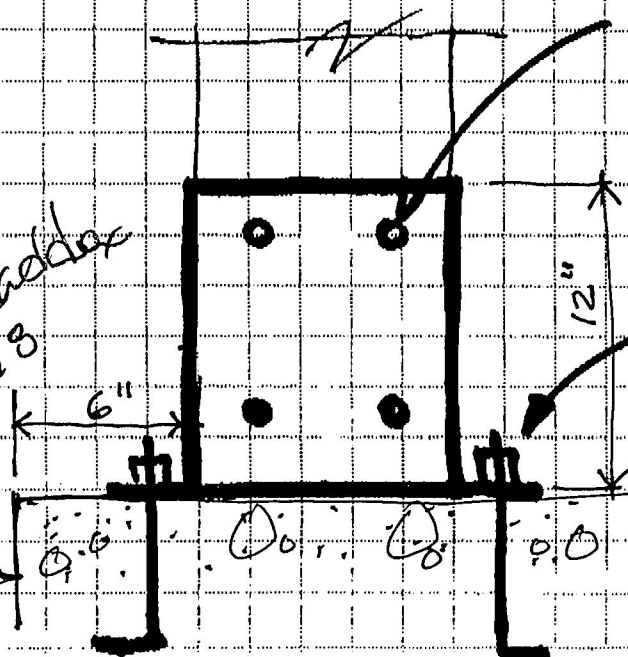
DATE: **11.16.98.**

leave 2 sides open to avoid trapping water @ post base.



welded plate assembly
3/8" THK.
(HDG after fabrication)

4 - 1/8" holes for bolts (as original shown).



4 - 3/4" A.R.
(12" embedment plus 3" hook).

William E. Maddox
11/17/98

Edge of slab



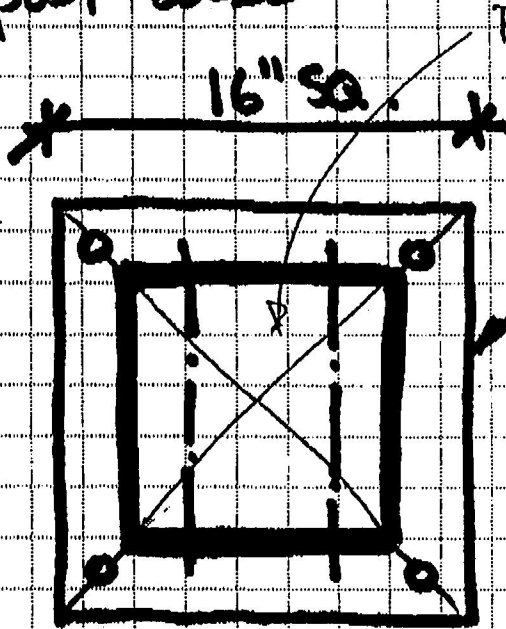
SNELL ENGINEERING

CONSULTANTS, INC.

PROJECT NUMBER: **98145**
PROJECT NAME: **Duval Park**
- Restroom

DATE: **11.16.98.**

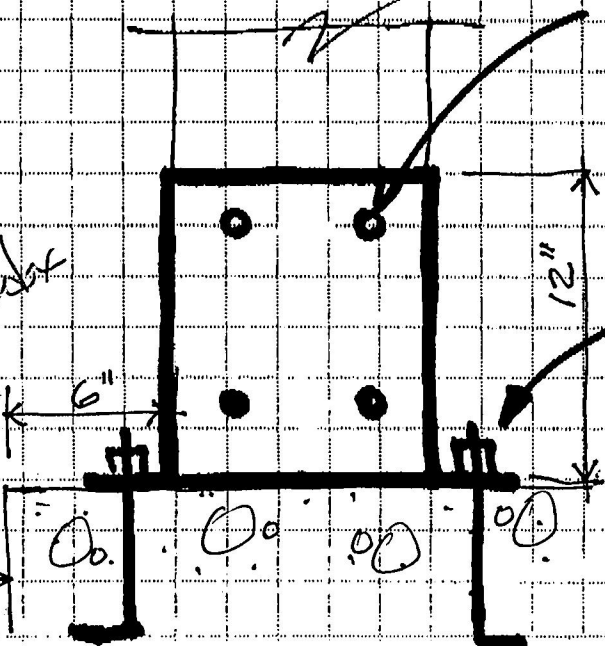
leave 2 sides open to avoid trapping water @ post base.



PT 10x10

welded plate assembly
3/8" THK.
(H.D.G. after fabrication)

4 - 1/8" holes for bolts (as original shown).



4 - 3/4" A.B.
(12" embedment plus 3" hook).

William B. McArthur
11/19/98

EDGE OF SLAB



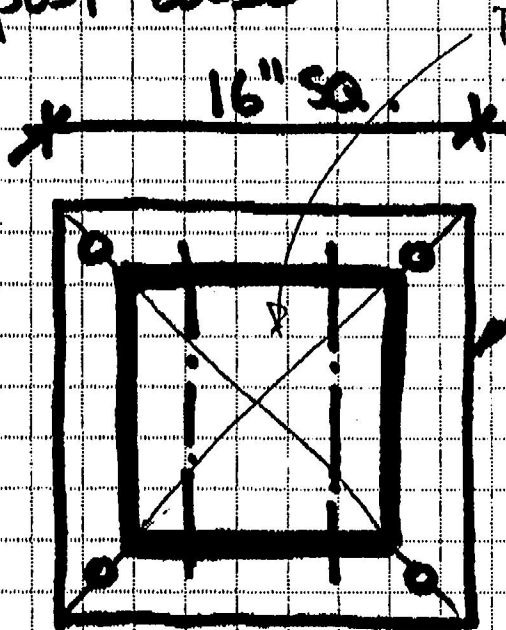
SNELL ENGINEERING

CONSULTANTS, INC.

PROJECT NUMBER: **98145**
PROJECT NAME: **Duval Park**
- Restroom

DATE: **11.16.98.**

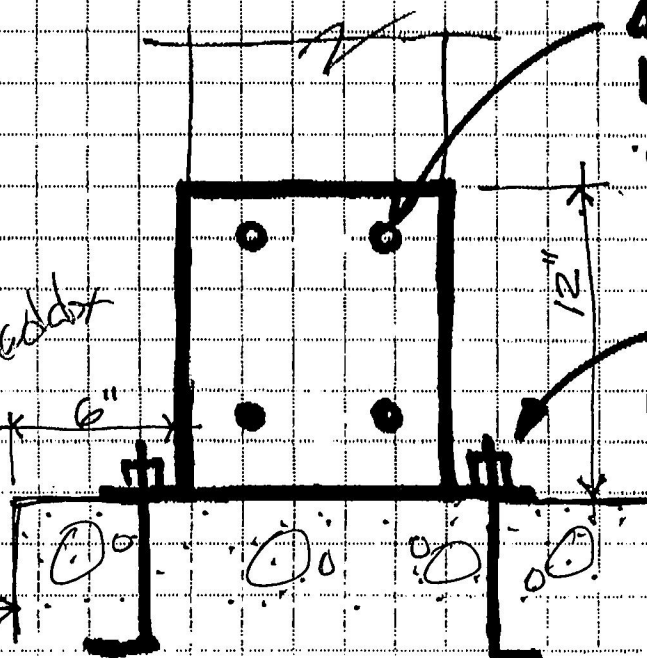
leave 2 sides open to avoid trapping
water @ post base.



welded plate
assembly
3/8" THK.
(H.D.G. after
fabrication)

4 - 1/8" ϕ holes for
bolts (as original
shown).

4 - 3/4" ϕ A.B.
(12" embedment
plus 3" hook).



William E. Medsker
11/19/98

EDGE OF
SLAB