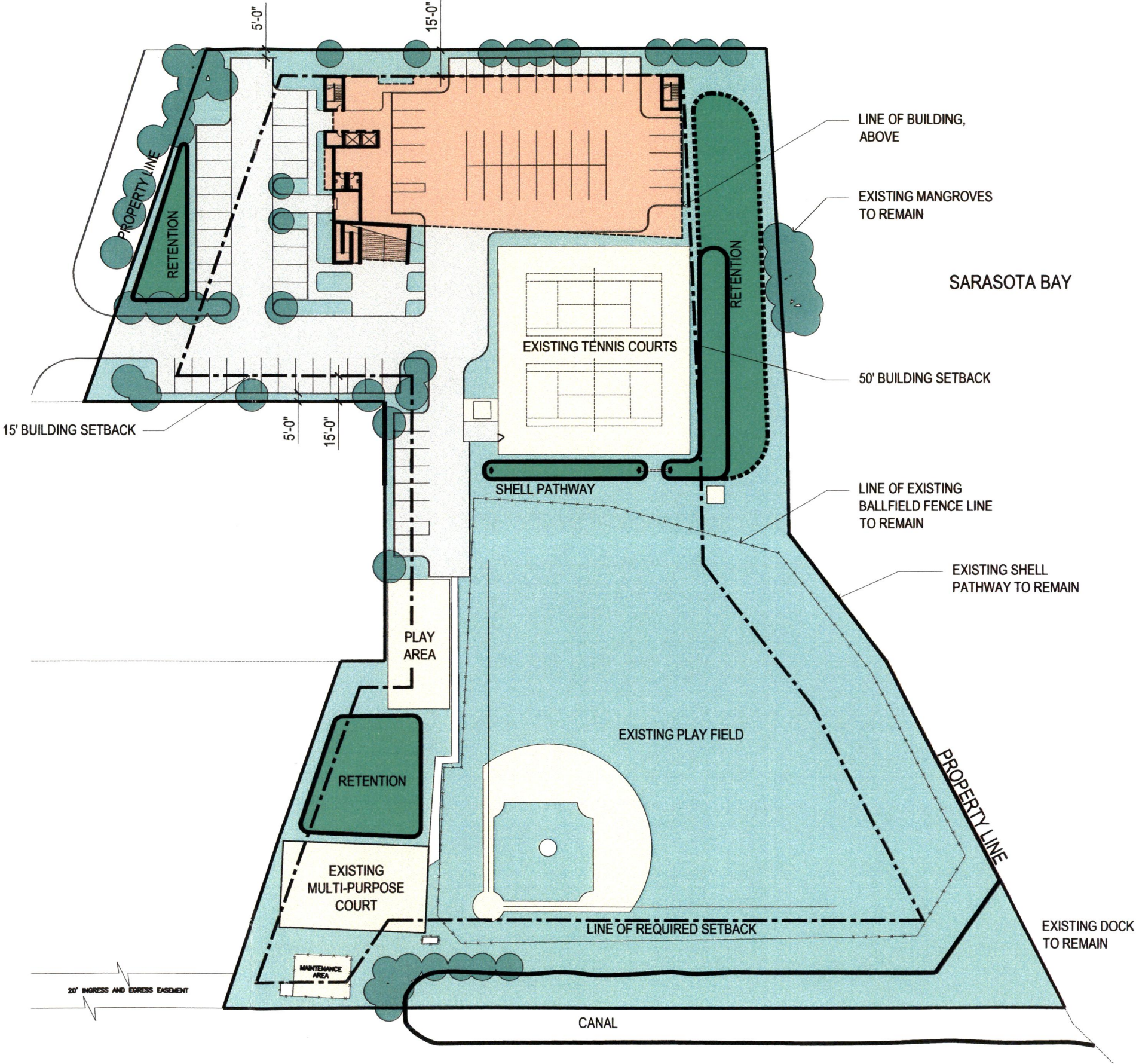


NUMBER OF (10' X 20') PARKING SPACES: 78 SPACES  
INCLUDING 4 HC SPACES

TOTAL SF OF SITE: 184,054 SF

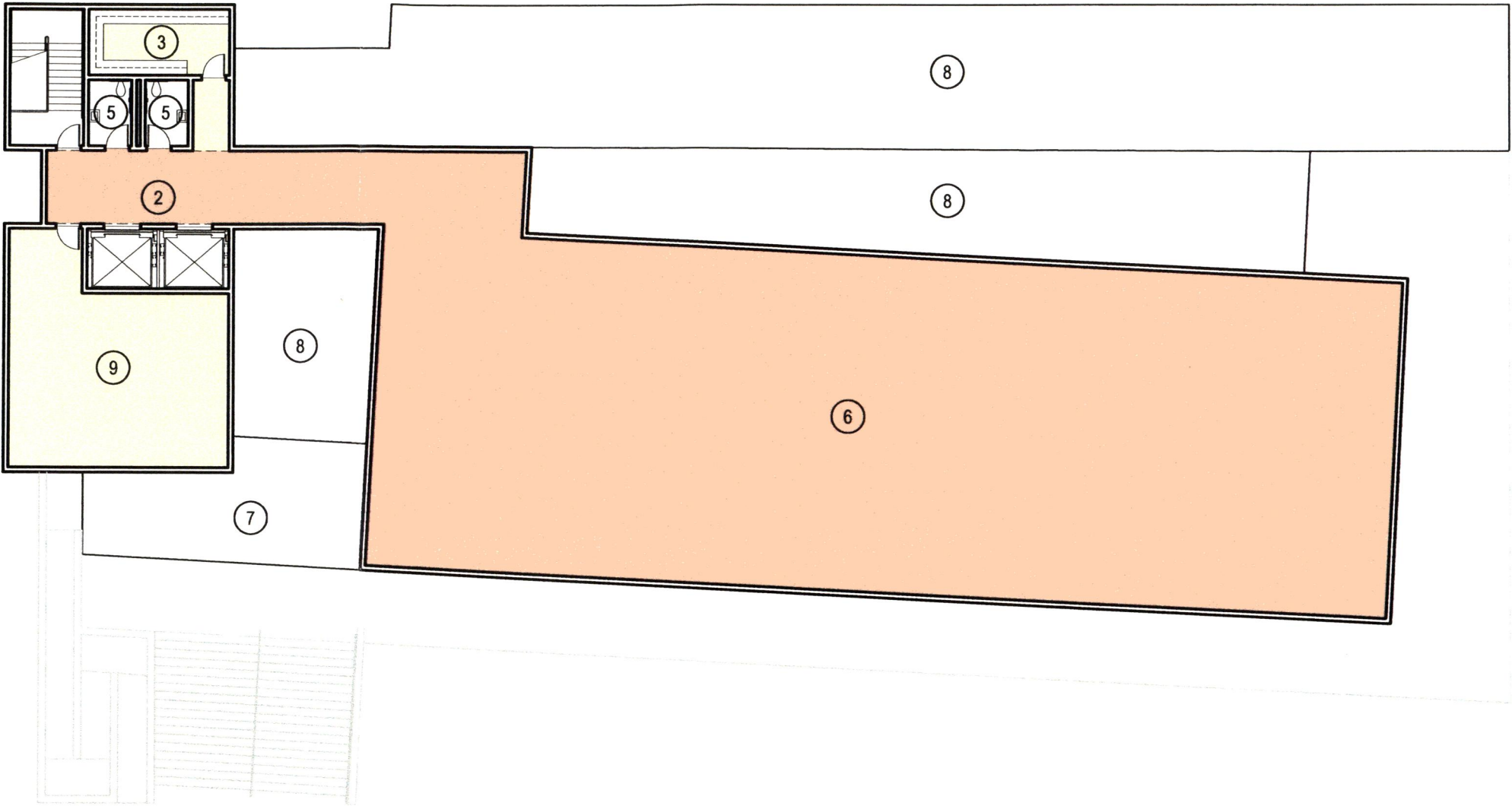


SCHEMATIC SITE PLAN (SCHEME "C")  
NTS



BUILDING ROOF TERRACE PLAN

- ① ELEVATORS
- ② ELEVATOR VESTIBULE
- ③ BREAKROOM
- ④ EGRESS STAIRS
- ⑤ REST ROOMS
- ⑥ ROOF TERRACE, 5000 SF
- ⑦ CANOPY, BELOW
- ⑧ LOWER ROOF, BELOW
- ⑨ MECHANICAL YARD



SCHEMATIC PLAN "C" ROOF TERRACE PLAN

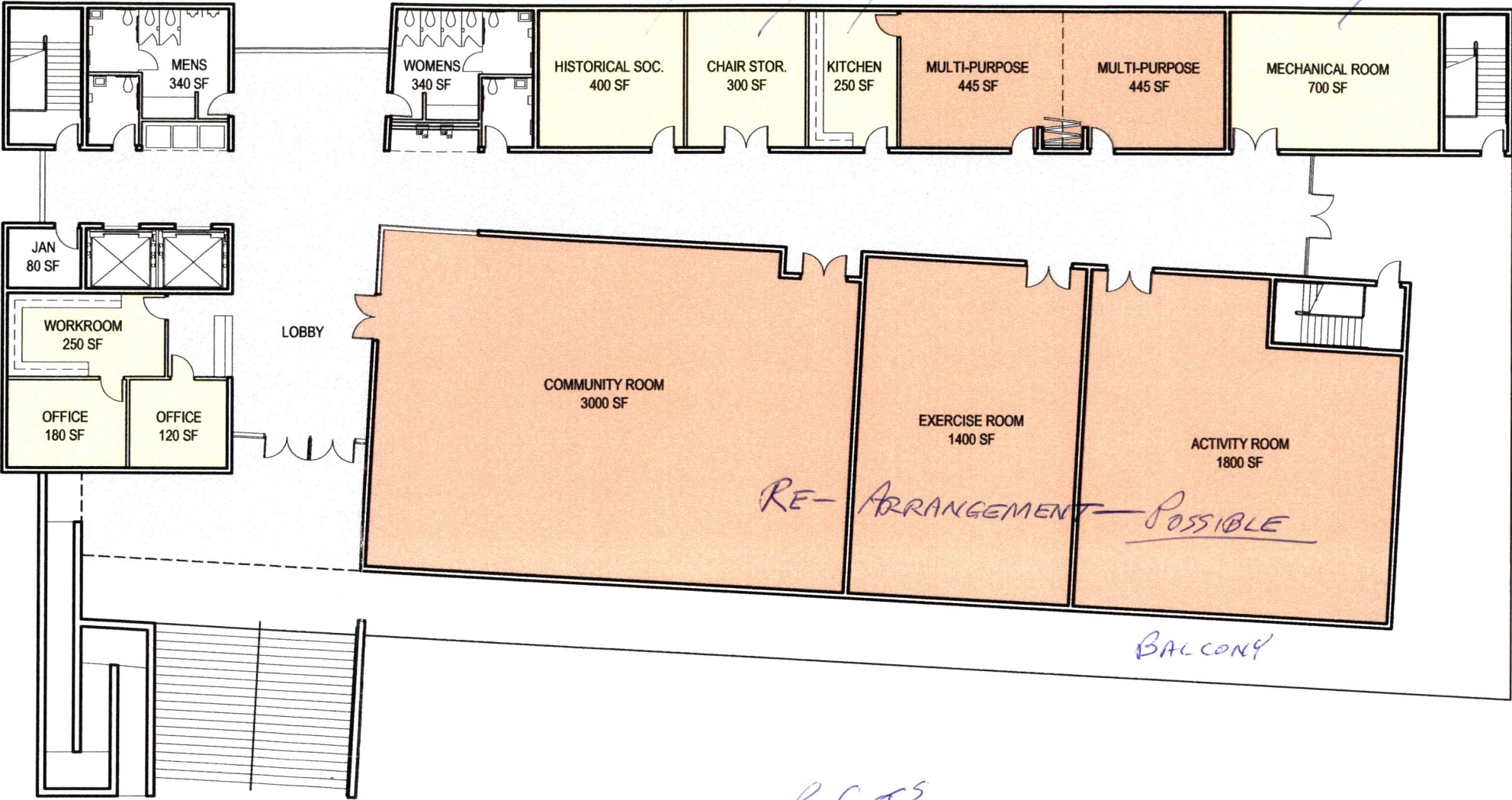
1" = 20'-0"



BUILDING FLOOR PLAN

- (program change)
- 1 MAIN ENTRY
  - 2 RAMP
  - 3 MAIN STAIRS
  - 4 EGRESS STAIRS
  - 5 MAIN LOBBY
  - 6 ELEVATORS
  - 7 STAFF OFFICE, (1) 180 SF, (1) 120 SF
  - 8 WORK ROOM, 250 SF
  - 9 REST ROOMS
  - 10 (CHAIR/STAGE) STORAGE, 300 SF
  - 11 ELECTRICAL ROOM
  - 12 MECHANICAL ROOM
  - 13 EXERCISE ROOM, 1400 SF
  - 14 ACTIVITY ROOM, 1800 SF
  - 15 JANITORS CLOSET
  - 16 VENDING AREA
  - 17 HISTORICAL SOC. STORAGE ROOM, 400 SF
  - 18 KITCHEN, 250 SF
  - 19 MULTIPURPOSE ROOMS, (2) AT 445 SF EA.
  - 20 COMMUNITY ROOM, 3000 SF
  - 21 PATIO
  - 22 HALLWAY

TOTAL FIRST FLOOR SQ. FOOTAGE - 14,415 SF



SCHEMATIC PLAN "C" FIRST FLOOR PLAN

1" = 20'-0"

