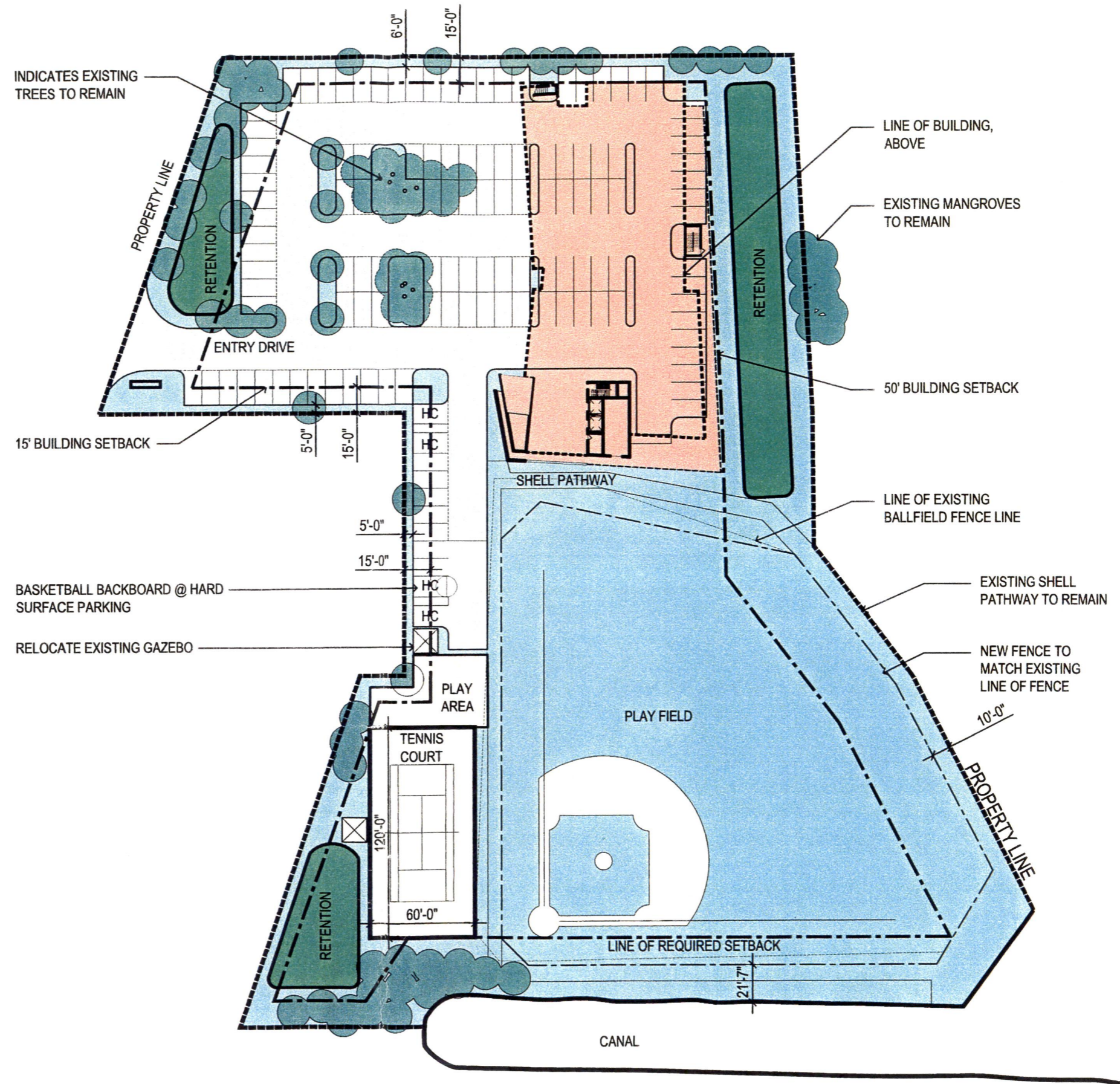


NUMBER OF (10' X 20') PARKING SPACES: 126 SPACES
INCLUDING 5 HC SPACES

TOTAL SF OF SITE: 184,054 SF



SCHEMATIC SITE PLAN
NTS



BUILDING FLOOR PLAN

- ① MAIN ENTRY
- ② RAMP
- ③ MAIN STAIRS
- ④ EGRESS STAIRS
- ⑤ MAIN LOBBY
- ⑥ ELEVATORS
- ⑦ STAFF OFFICE, (1) 150 SF, (1) 100 SF
- ⑧ WORK ROOM, 250 SF
- ⑨ RESTROOMS
- ⑩ CHAIR/STAGE STORAGE, 400 SF
- ⑪ GENERAL STORAGE, 250 SF
- ⑫ ELECTRICAL ROOM
- ⑬ MECHANICAL ROOM
- ⑭ EXERCISE ROOM, 1800 SF
- ⑮ ACTIVITY ROOM, 3000 SF
- ⑯ JANITORS CLOSET
- ⑰ VENDING AREA
- ⑱ HISTORICAL SOC. STORAGE ROOM, 450 SF
- ⑲ KITCHEN, 300 SF
- ⑳ MULTI-PURPOSE ROOMS, (3) AT 425 SF EA.
- ㉑ COMMUNITY ROOM VESTIBULE
- ㉒ COMMUNITY ROOM, 3000 SF
- ㉓ PATIO
- ㉔ HALLWAY

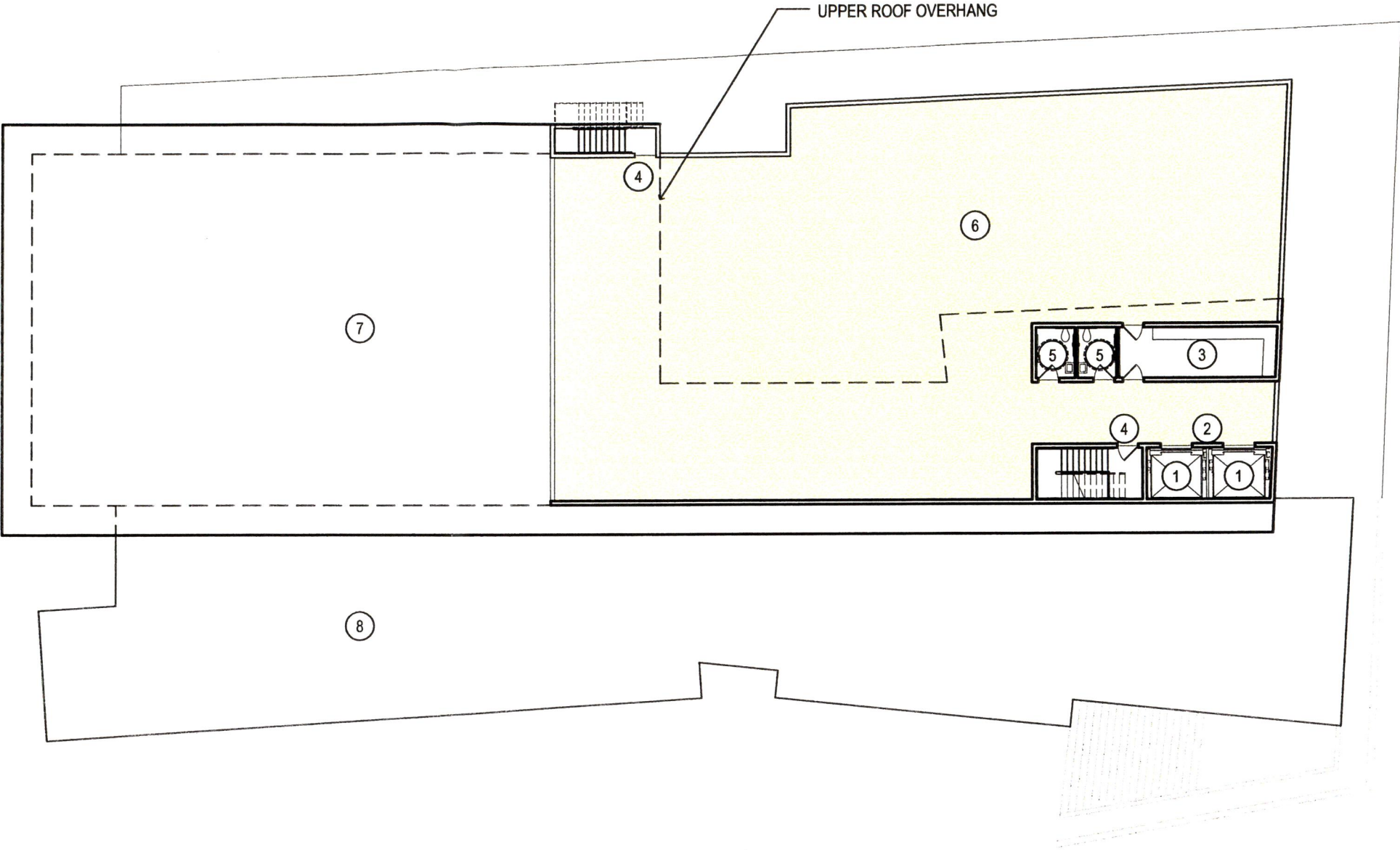


SCHEMATIC FIRST FLOOR PLAN
1" = 20'-0"



BUILDING FLOOR PLAN

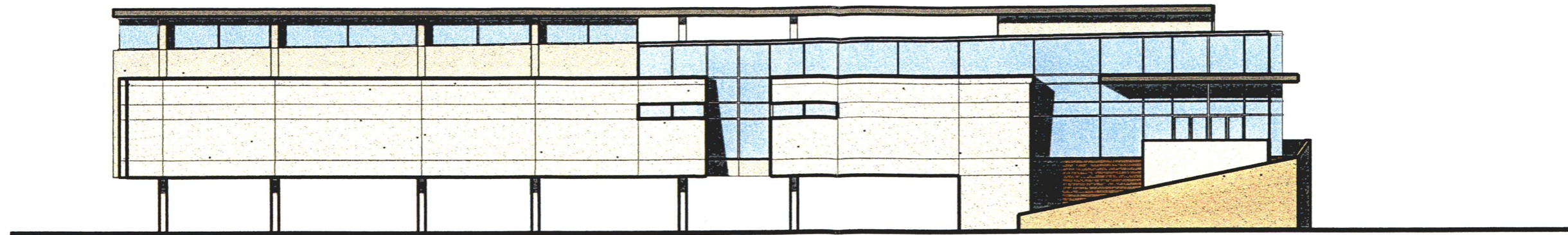
- ① ELEVATORS
- ② ELEVATOR VESTIBULE
- ③ BREAKROOM
- ④ EGRESS STAIRS
- ⑤ RESTROOMS
- ⑥ ROOF TERRACE, 5000 SF
- ⑦ UPPER ROOF
- ⑧ LOWER ROOF



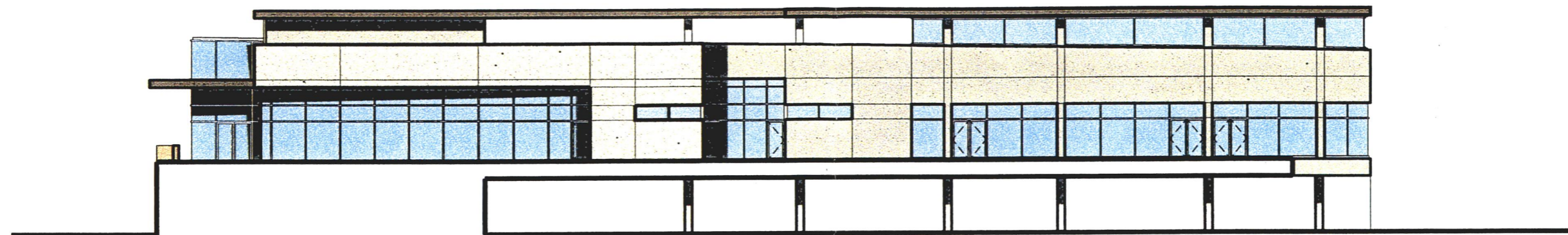
SCHEMATIC ROOF TERRACE PLAN

1" = 20'-0"

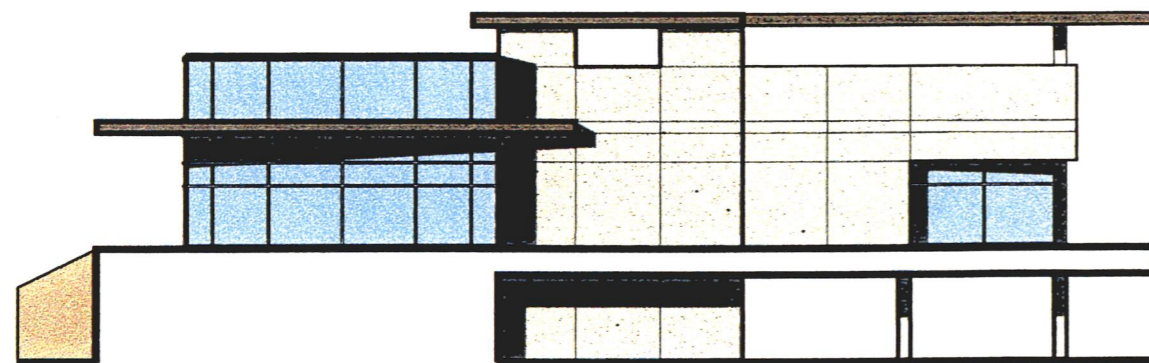




EAST ELEVATION



WEST ELEVATION



SOUTH ELEVATION



NORTH ELEVATION

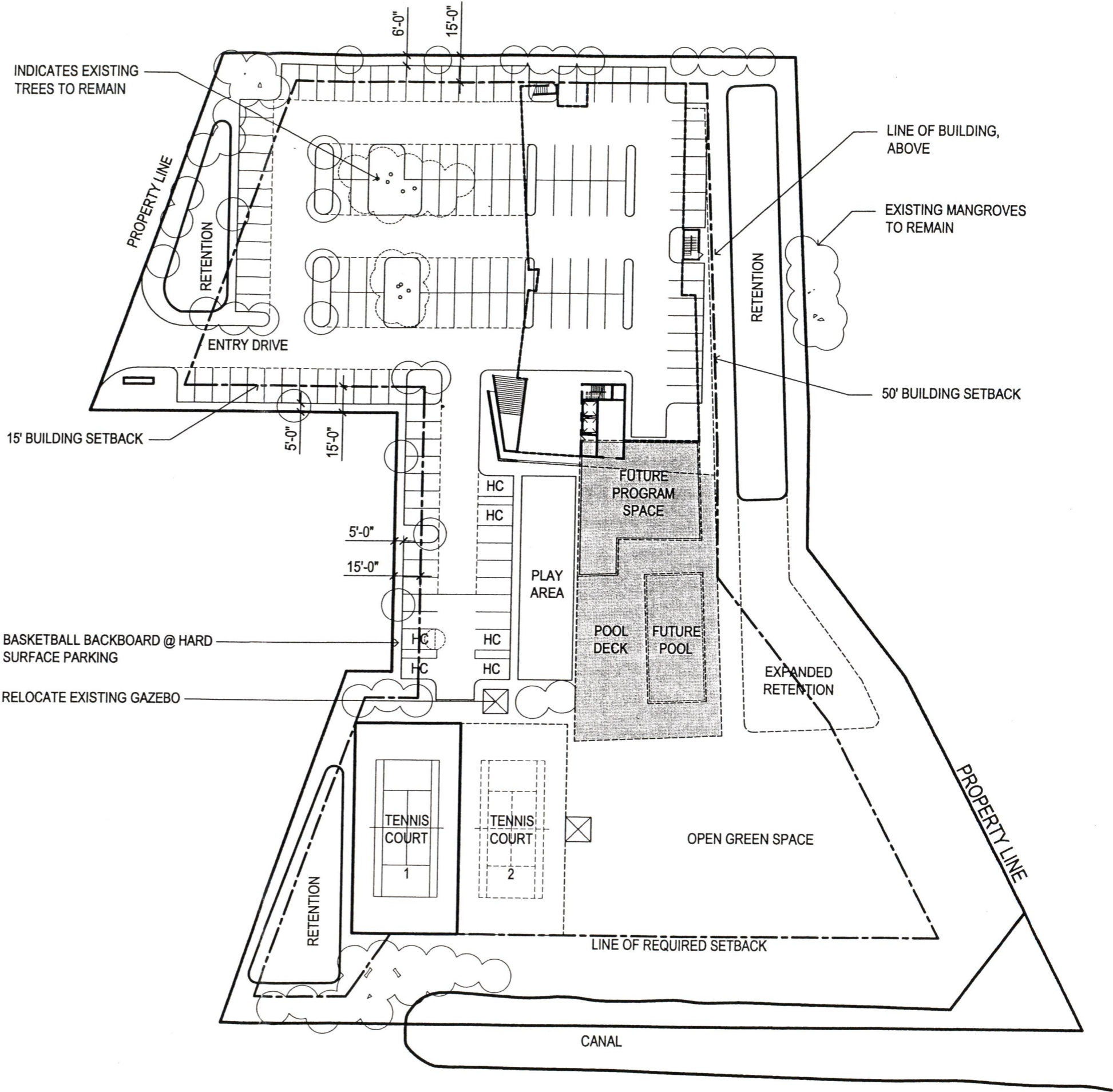
SCHEMATIC ELEVATIONS

1" = 20'-0"

NUMBER OF (10' X 20') PARKING SPACES: 138 SPACES
INCLUDING 5 HC SPACES

58, 200 SF OF HARD SURFACE
14,725 SF OF REQUIRED RETENTION (APPROXIMATELY)

TOTAL SF OF SITE: 184,054 SF OF SITE



SCHEMATIC SITE PLAN
NTS

